

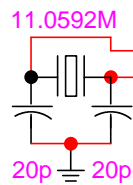
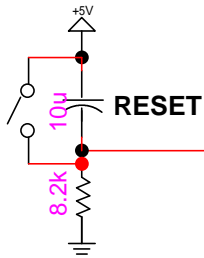
8051 in circuit debugger based on AT89C51
Chin-Shiuh Shieh 1999/11/21

AT89C51

1	P1.0	VCC	40
2	P1.1	P0.0(AD0)	39
3	P1.2	P0.1(AD1)	38
4	P1.3	P0.2(AD2)	37
5	P1.4	P0.3(AD3)	36
6	P1.5	P0.4(AD4)	35
7	P1.6	P0.5(AD5)	34
8	P1.7	P0.6(AD6)	33
9	RST	P0.7(AD7)	32
10	P3.0(RXD)	/EA(VPP)	31
11	P3.1(TXD)	DALE(/PROG)	30
12	P3.2(/INT0)	/PSEN	29
13	P3.3(/INT1)	P2.7(A15)	28
14	P3.4(T0)	P2.6(A14)	27
15	P3.5(T1)	P2.5(A13)	26
16	P3.6(/WR)	P2.4(A12)	25
17	P3.7(/RD)	P2.3(A11)	24
18	XTAL2	P2.2(A10)	23
19	XTAL1	P2.1(A9)	22
20	GND	P2.0(A8)	21

In Circuit Socket

1	P1.0	VCC	40
2	P1.1	P0.0(AD0)	39
3	P1.2	P0.1(AD1)	38
4	P1.3	P0.2(AD2)	37
5	P1.4	P0.3(AD3)	36
6	P1.5	P0.4(AD4)	35
7	P1.6	P0.5(AD5)	34
8	P1.7	P0.6(AD6)	33
9	RST	P0.7(AD7)	32
10	P3.0(RXD)	/EA(VPP)	31
11	P3.1(TXD)	DALE(/PROG)	30
12	P3.2(/INT0)	/PSEN	29
13	P3.3(/INT1)	P2.7(A15)	28
14	P3.4(T0)	P2.6(A14)	27
15	P3.5(T1)	P2.5(A13)	26
16	P3.6(/WR)	P2.4(A12)	25
17	P3.7(/RD)	P2.3(A11)	24
18	XTAL2	P2.2(A10)	23
19	XTAL1	P2.1(A9)	22
20	GND	P2.0(A8)	21



74373

1	/OC	Vcc	20
2	1Q	8Q	19
3	1D	8D	18
4	2D	7D	17
5	2Q	7Q	16
6	3Q	6Q	15
7	3D	6D	14
8	4D	5D	13
9	4Q	5Q	12
10	GND	CK	11

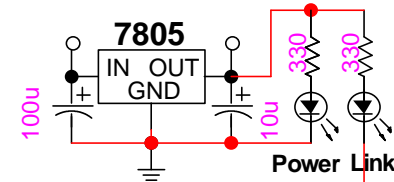
62256

1	A14	Vcc	28
2	A12	/WE	27
3	A7	A13	26
4	A6	A8	25
5	A5	A9	24
6	A4	A11	23
7	A3	/OE	22
8	A2	A10	21
9	A1	/CS	20
10	A0	I/O $\bar{0}$	19
11	I/O $\bar{0}$	I/O $\bar{6}$	18
12	I/O $\bar{1}$	I/O $\bar{5}$	17
13	I/O $\bar{2}$	I/O $\bar{4}$	16
14	Vss	I/O $\bar{3}$	15

7408 AND

1	1A	Vcc	14
2	1B	4A	13
3	1Y	4B	12
4	2A	4Y	11
5	2B	3A	10
6	2Y	3B	9
7	GND	3Y	8

Vin > 7V DC Vout = 5V DC



HIN232

1	C1+	Vcc	16
2	V+	GND	15
3	C1-	T1out	14
4	C2+	R1in	13
5	C2-	R1out	12
6	V-	T1in	11
7	T2out	T2in	10
8	R2in	R2out	9

RS232 Connector

1	CD	DSR	6
2	RD	RTS	7
3	TD	CTS	8
4	DTR	RI	9
5	GND		